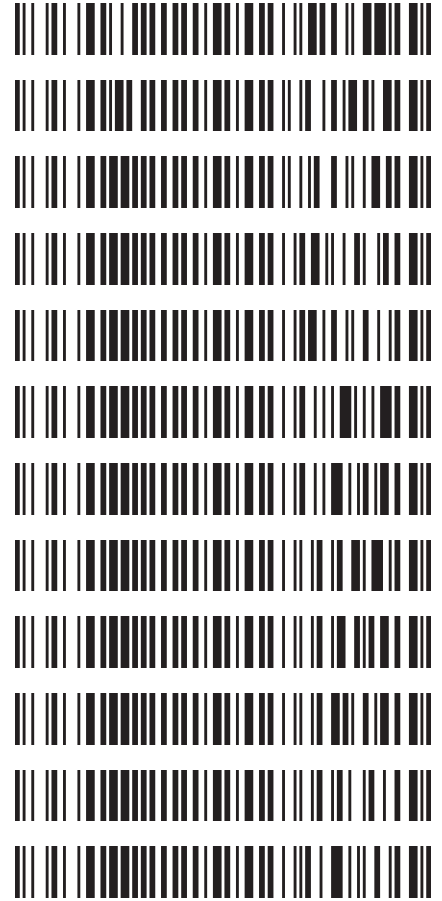


*Bylee*

*g*

**Worklist: 2526**

<u>LAB_CASE</u>	<u>ITEM</u>	<u>TASK_ID</u>	<u>DESCRIPTION</u>
C2018-1107	2	119798	AM 3 Urine Carboxy-THC
M2018-2672	4	119796	AM 3 Urine Carboxy-THC
P2018-1520	2	119797	AM 3 Urine Carboxy-THC
P2018-1716	9	119799	AM 3 Urine Carboxy-THC
P2018-1750	1	119800	AM 3 Urine Carboxy-THC
P2018-1786	1	119801	AM 3 Urine Carboxy-THC
P2018-1788	1	119802	AM 3 Urine Carboxy-THC
P2018-1796	1	119803	AM 3 Urine Carboxy-THC
P2018-1797	1	119804	AM 3 Urine Carboxy-THC
P2018-1800	1	119805	AM 3 Urine Carboxy-THC
P2018-1802	1	119806	AM 3 Urine Carboxy-THC
P2018-1809	1	119807	AM 3 Urine Carboxy-THC



Data Path : C:\My Files\cshrum\Desktop\Consolidated\Data\URINE\am 3 worklist 2526\  
 Data File : THC-NC.D  
 Acq On : 27 Jun 2018 12:15  
 Operator : C. Shrum  
 Sample : Negative Control  
 Misc : Lot # POC112116; AM #3 Worklist 2526  
 ALS Vial : 76 Sample Multiplier: 1

Integration Parameters: events.e  
 Integrator: ChemStation

Method : C:\gcms\1\methods\TOX.M  
 Title :

Signal : EIC Ion 371.00 (370.70 to 371.70): THC-NC.D\data.ms

peak #	R.T. min	first scan	max scan	last scan	PK TY	peak height	corr. area	corr. % max.	% of total
--------	----------	------------	----------	-----------	-------	-------------	------------	--------------	------------

No peaks were detected using the method integration parameters!

Signal : EIC Ion 473.00 (472.70 to 473.70): THC-NC.D\data.ms

peak #	R.T. min	first scan	max scan	last scan	PK TY	peak height	corr. area	corr. % max.	% of total
--------	----------	------------	----------	-----------	-------	-------------	------------	--------------	------------

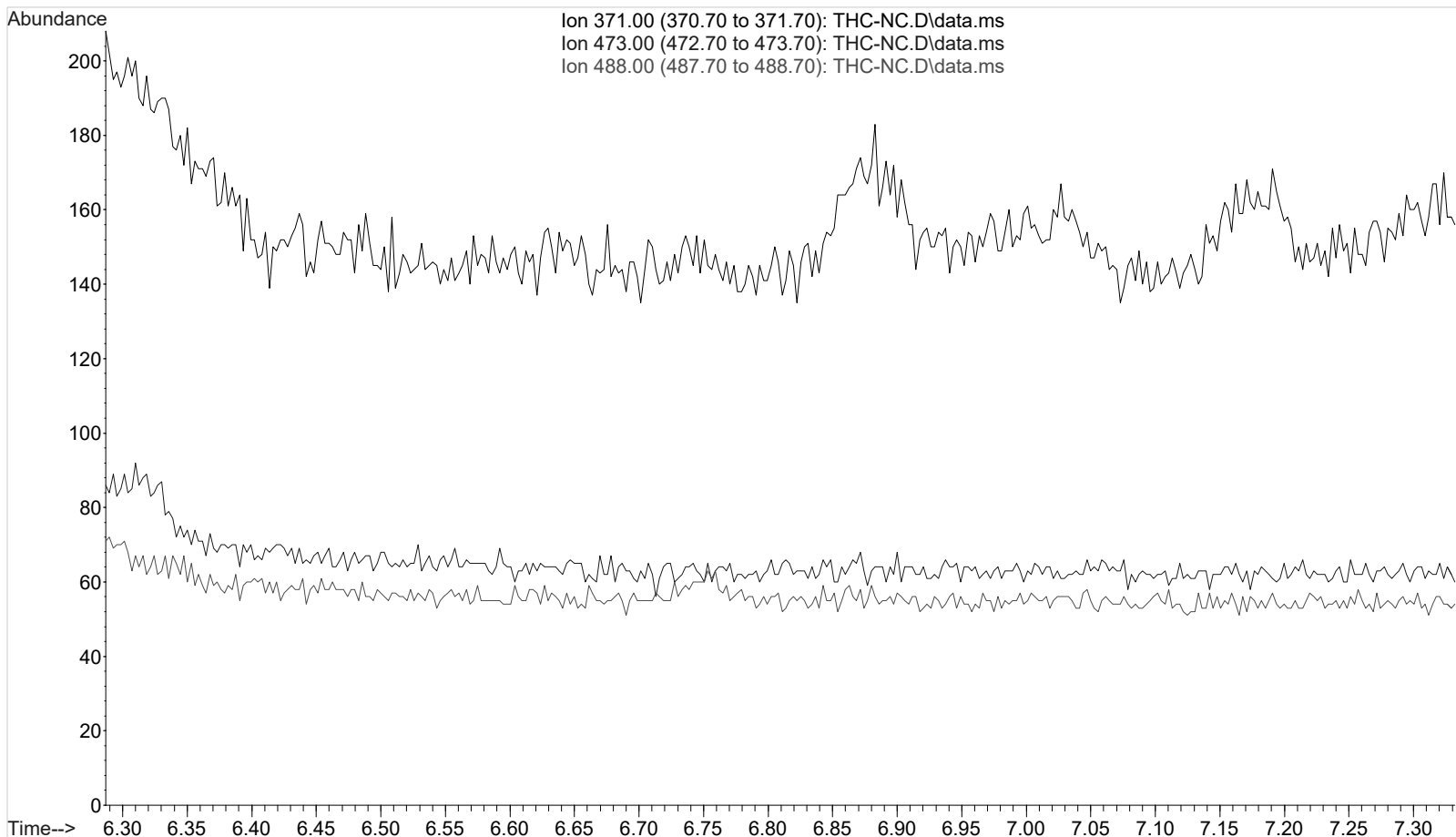
No peaks were detected using the method integration parameters!

Signal : EIC Ion 488.00 (487.70 to 488.70): THC-NC.D\data.ms

peak #	R.T. min	first scan	max scan	last scan	PK TY	peak height	corr. area	corr. % max.	% of total
--------	----------	------------	----------	-----------	-------	-------------	------------	--------------	------------

No peaks were detected using the method integration parameters!

TOX.M Thu Jun 28 09:30:49 2018



Area Percent Report

CS

Data Path : C:\My Files\cshrum\Desktop\Consolidated\Data\URINE\am 3 worklist 2526\  
Data File : THC-PC1.D  
Acq On : 27 Jun 2018 12:27  
Operator : C. Shrum  
Sample : Spiked Positive c-THC Control  
Misc : c-THC lot # 0497429 in Negative Lot # POC112116; Worklist 2526  
ALS Vial : 77 Sample Multiplier: 1

Integration Parameters: events.e  
Integrator: ChemStation

Method : C:\gcms\1\methods\TOX.M  
Title :

Signal : EIC Ion 371.00 (370.70 to 371.70): THC-PC1.D\data.ms

peak #	R.T. min	first scan	max scan	last scan	PK TY	peak height	corr. area	corr. % max.	% of total
1	6.888	159	210	227	BV	1097	23899	100.00%	100.000%

Sum of corrected areas: 23899

Signal : EIC Ion 473.00 (472.70 to 473.70): THC-PC1.D\data.ms

peak #	R.T. min	first scan	max scan	last scan	PK TY	peak height	corr. area	corr. % max.	% of total
1	6.887	185	209	230	BB	423	9221	100.00%	100.000%

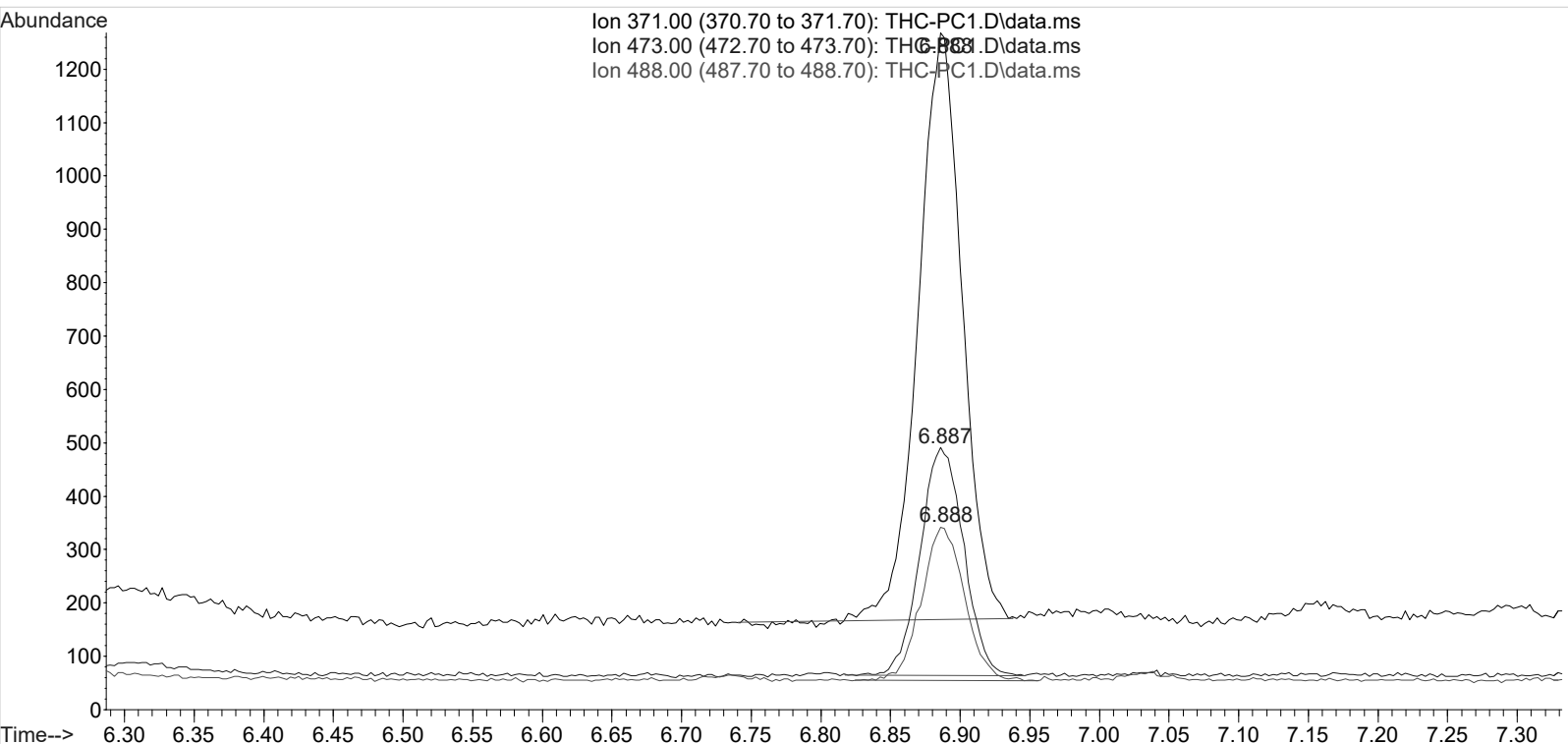
Sum of corrected areas: 9221

Signal : EIC Ion 488.00 (487.70 to 488.70): THC-PC1.D\data.ms

peak #	R.T. min	first scan	max scan	last scan	PK TY	peak height	corr. area	corr. % max.	% of total
1	6.888	188	210	234	BB	287	6200	100.00%	100.000%

Sum of corrected areas: 6200

TOX.M Thu Jun 28 09:30:07 2018



Area Percent Report

CS

Data Path : C:\My Files\cshrum\Desktop\Consolidated\Data\URINE\am 3 worklist 2526\  
Data File : THC-PC2.D  
Acq On : 27 Jun 2018 21:49  
Operator : C. Shrum  
Sample : Spiked Positive c-THC Control  
Misc : c-THC lot # 0497429 in Negative Lot # POC112116; Worklist 2526  
ALS Vial : 77 Sample Multiplier: 1

Integration Parameters: events.e  
Integrator: ChemStation

Method : C:\gcms\1\methods\TOX.M  
Title :

Signal : EIC Ion 371.00 (370.70 to 371.70): THC-PC2.D\data.ms

peak #	R.T. min	first scan	max scan	last scan	PK TY	peak height	corr. area	corr. % max.	% of total
1	6.876	171	205	229	BV 2	1729	38576	100.00%	100.000%

Sum of corrected areas: 38576

Signal : EIC Ion 473.00 (472.70 to 473.70): THC-PC2.D\data.ms

peak #	R.T. min	first scan	max scan	last scan	PK TY	peak height	corr. area	corr. % max.	% of total
1	6.879	190	207	234	BB 2	688	14767	100.00%	100.000%

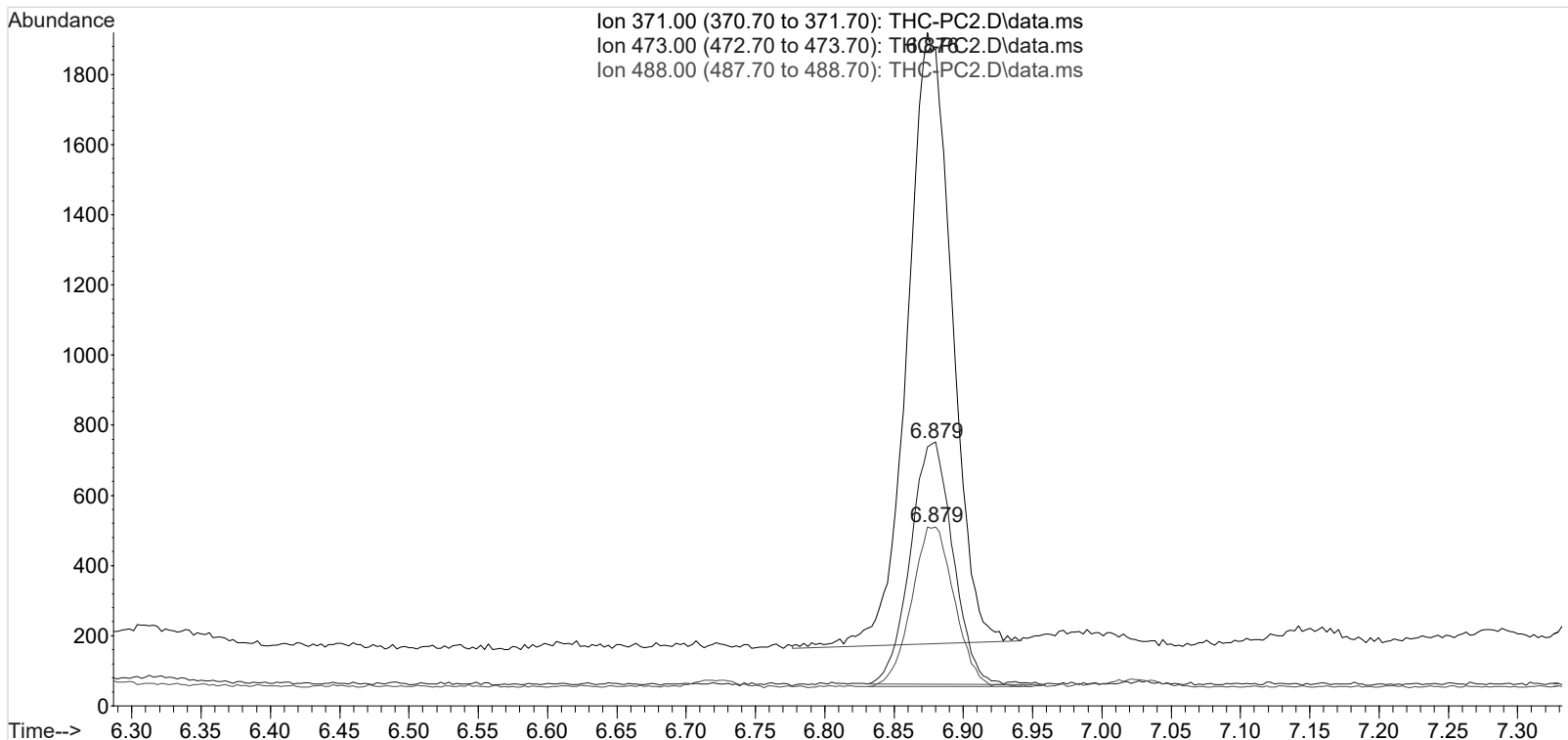
Sum of corrected areas: 14767

Signal : EIC Ion 488.00 (487.70 to 488.70): THC-PC2.D\data.ms

peak #	R.T. min	first scan	max scan	last scan	PK TY	peak height	corr. area	corr. % max.	% of total
1	6.879	190	207	231	BB 2	453	9725	100.00%	100.000%

Sum of corrected areas: 9725

TOX.M Thu Jun 28 09:30:32 2018



Data Path : C:\My Files\cshrum\Desktop\Consolidated\Data\URINE\am 3 worklist 2526\  
Data File : THC-C3.D  
Acq On : 28 Jun 2018 9:38  
Operator : C. Shrum  
Sample : Biorad C3 Control  
Misc : C3 Lot # 68440; Worklist 20526  
ALS Vial : 78 Sample Multiplier: 1

Integration Parameters: events.e  
Integrator: ChemStation

Method : C:\gcms\1\methods\TOX.M  
Title :

Signal : EIC Ion 371.00 (370.70 to 371.70): THC-C3.D\data.ms

peak #	R.T. min	first scan	max scan	last scan	PK TY	peak height	corr. area	corr. % max.	% of total
1	6.900	197	214	230	VV 2	429	9528	100.00%	100.000%

Sum of corrected areas: 9528

Signal : EIC Ion 473.00 (472.70 to 473.70): THC-C3.D\data.ms

peak #	R.T. min	first scan	max scan	last scan	PK TY	peak height	corr. area	corr. % max.	% of total
1	6.904	182	215	242	BB 2	181	3833	100.00%	100.000%

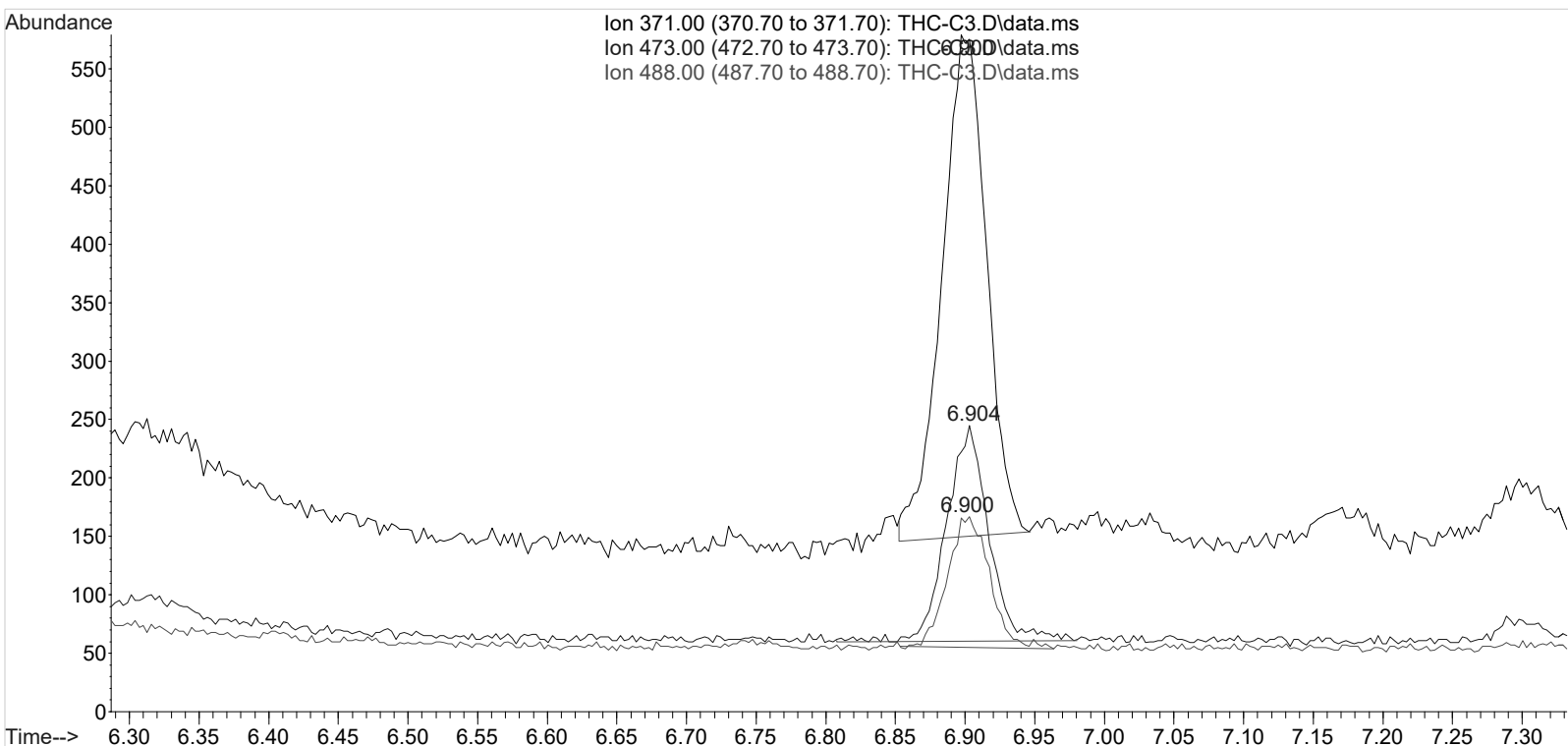
Sum of corrected areas: 3833

Signal : EIC Ion 488.00 (487.70 to 488.70): THC-C3.D\data.ms

peak #	R.T. min	first scan	max scan	last scan	PK TY	peak height	corr. area	corr. % max.	% of total
1	6.900	198	214	236	BB 2	110	2308	100.00%	100.000%

Sum of corrected areas: 2308

TOX.M Thu Jun 28 10:01:20 2018



## 2.4.4 Carboxy-THC QC Calculations (AM #3)<sub>cs</sub>

Run Date: 6/27/2018

Case Calculations:

Lab Case #: BRC3 Lot 68440

<i>EIC Ion 371 Corr. Area:</i>	9528	
<i>EIC Ion 473 Corr. Area:</i>	3833	473:371 Ratio: <span style="background-color: #cccccc; padding: 2px;">0.402</span>
<i>EIC Ion 488 Corr. Area:</i>	2308	488:371 Ratio: <span style="background-color: #cccccc; padding: 2px;">0.242</span>

Quality Control Calculations:

Retention Time acceptable range: 6.688 to 7.076

	<i>1st ctrl</i>	<i>2nd ctrl</i>
<i>EIC Ion 371 Corr. Area:</i>	23899	38576
<i>EIC Ion 473 Corr. Area:</i>	9221	14767
<i>EIC Ion 488 Corr. Area:</i>	6200	9725

*Approximate minimum corrected area of 371 ion: ~* 4780

<i>Ratio of 473:371</i>				
<i>1st ctrl</i>	<b><u>0.386</u></b>	<i>2nd ctrl</i>	<b><u>0.383</u></b>	<i>avg.</i> <b><u>0.384</u></b>
<i>Accepted Range</i> (+/- 20%) <b><u>0.307 - 0.461</u></b>				

<i>Ratio of 488:371</i>				
<i>1st ctrl</i>	<b><u>0.259</u></b>	<i>2nd ctrl</i>	<b><u>0.252</u></b>	<i>avg</i> <b><u>0.256</u></b>
<i>Accepted Range</i> (+/- 20%): <b><u>0.205 - 0.307</u></b>				

Carboxy-calculation sheet  
Revision 0 effective date 10/23/13  
Issuing authority: Quality Manager